

Ancient Tamralipta/Tamralipti was a maritime hub in the Bay of Bengal interaction sphere functional from c. third century BCE to the eighth century CE. Tamralipta or Tamralipti is identified with the modern town of Tamluk situated in the Purba Medinipur district of West Bengal, Fig.1. Located strategically on the right bank of the Rupnarayan River, Tamralipta is mentioned in a wide array of classical texts and foreign travel accounts as a flourishing port city that connected the Indian subcontinent to a broader maritime network across South and South-East Asia. The present article deals with a coin collection

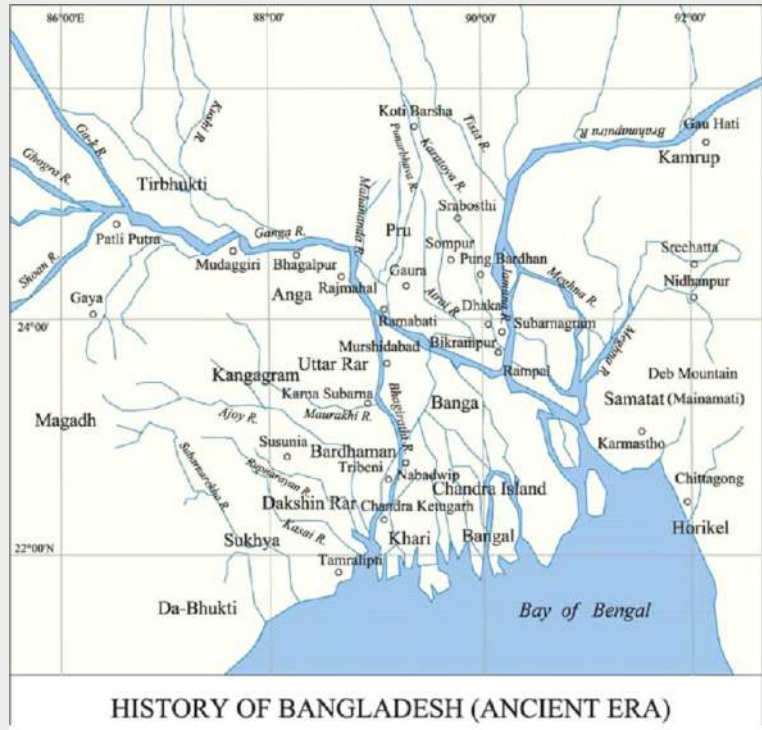


Fig 1: Map of early and early medieval sub-divisions of Bengal
Photo Courtesy: Banglapedia.org

preserved in a local school, including a hoard that was discovered by chance on the bank of the Rupnarayan River in the last quarter of the nineteenth century. This hoard, along with a few other discoveries from Tamluk and nearby villages like Moyna, were preserved in the museum located in Tamluk Hamilton High School, established in 1852 by Robert Charles Hamilton, a salt merchant and a philanthropist, Fig.2. These coins were reported in two different articles but were not documented in detail till date (Ramachandran 1951, 226-39; Dikshit 1924, 74-75). The present authors visited the school in March 2025 and documented these coins; the present paper is the final outcome of our visit.

Early un-inscribed cast copper coins have been reported from various sites in Bengal like Bangarh (Dakshin Dinajpur), Dihar (Bankura), Jaypur (Bankura), Mangalkot (Burdwan), Chandraketugarh (North 24 Parganas), Atghara (South 24 Parganas), Tilpi and Dhosha (South 24 Parganas), Kankandighi (South 24 Parganas), Deulpota (South 24 Parganas), Harinarayanpur (South 24 Parganas), Pakurtala (South 24 Parganas), and Tamluk (Purba Medinipur) (Middya 2022, 100-101; Mukherjee 2012, 20; Roy 2006, 1-11; Sarkar 2023, 47). As far as coin hoards of the early historic phase of Bengal are concerned, one finds very few hoards being documented or catalogued



Fig.2: Hamilton School Museum and outer facade of Hamilton School

in detail. The present paper is an attempt to catalogue these coins and situate them in the broader historical framework. We have taken into consideration the early historic coins in this collection; hence punch-marked coins and early un-inscribed cast copper issues have been catalogued here.

Coin Hoard Contextualized

It is worth mentioning that in 1868, a local resident of Tamluk named Dinabandhu Mitra discovered a 'copper coin of Mauryan Period', probably a copper punch-marked coin or an early un-inscribed cast copper coin from the riverbed of the Rupnarayan. Again, in April and May 1883, Gaurdas Bysack recovered a terracotta figurine of c. second century BCE along with some copper coins from the bed of the Rupnarayan (Bysack 1888, 113–14; Chattopadhyay 2019, 47). Such discoveries raised the interest of the local people, and in this course more coins were discovered from a mound. These coins were initially preserved in the local school premises at Hamilton High School. The school museum has a collection of some 234 coins.¹ The collection includes three punch-marked coins (two silver coins and one copper coin), 191 un-inscribed cast copper coins, 38 unidentified coins and coin fragments and 2 Sri Lankan Lakshmi plaques. All these coins have been documented here in the appended Catalogue.

Early un-inscribed cast copper coins of the universal type are Mauryan issues bearing an elephant on the obverse and *three arched hill* with a crescent on the reverse, and the other type is the four or five symbol on the obverse and four on the reverse, usually square or rectangular in shape are mostly Mauryan issues some of which also continued in the post-Mauryan phase. The Tamluk Hamilton museum collection has one such hoard of cast copper coins. Unfortunately, all documents and data related to the Hamilton School Museum were lost in a flood in 1978, and no documents related to the coin find have survived in the school. This hoard is mentioned to have approximately 350+ coins as Dikshit reported that 'A collection of some 350 coins, mostly of the rectangular cast type was examined by me...Two main types...the first represented by some 250, the second by some

100 specimens' (Dikshit 1924, 74). The use of the term 'some' by Dikshit leaves room for doubt regarding the exact number of coins, which may or may not be 350. Despite the fact that the hoard was partially preserved in the Hamilton High School Museum and remainder of the collection went to the Indian Museum, the latter does not have a clear account of the acquisition of the partial hoard. Interestingly, Roychowdhury had mentioned that 'More than 200 coins found during these piecemeal excavations were transferred to the Indian Museum' (Roychowdhury 2018, 265). Hence, we would like to assume that approximately some 120 to 200 coins could have entered the Indian Museum collection sometime before 1921. The partial collection was sent to the Indian Museum sometime between 1881 and 1921, i.e. around the time of its discovery and Dikshit's publication. Dikshit mentions that 'the antiquities recovered from the high mound on the river bank referred to above are now preserved, at least partially, at the local high school'. The use of the term 'partially' has led us to infer that the rest of the coins were sent to some other collection. The Hamilton school coin collection was published by T.N. Ramachandran in 1951, which was a result of his field trip and exploration wherein he was accompanied by G.S. Dutt and K.N. Dikshit. Ramachandran clearly mentions in his publication that the rest of the coins were with the Indian Museum (Ramachandran 1951, 230). The present authors contacted the Indian Museum authorities to verify how and when this partial collection reached them, but surprisingly there are no early cast copper or punch-marked coins in the Indian Museum from Tamluk or any nearby village which may be assigned to this hoard.

Dikshit mentioned that the hoard can be classified into two varieties—the universal round and the universal rectangular. However, Ramachandran mentioned that the hoard has seven varieties of cast copper coins, but he has not specified the varieties; he only mentions a coin with a rider, but none of the varieties are clearly spelled out. Our documentation also reveals that there were seven different varieties of early un-inscribed cast copper coins and two cast coins from Sri Lanka, popularly known as Lakshmi plaque. This was not reported by any of the previous authors. The present authors have identified these coins and it is worth mentioning that these are the first discovery of any Sri Lankan coins not only from Tamluk but from any region in West Bengal. However, one such plaque was reported from Bangladesh (Mitchiner 2000: 28) as found locally from Dhaka and preserved in a private collection. Such Lakshmi plaques have been reported from South India especially the region around Karur. We shall be discussing this in proper context below.

The coins in this hoard may be classified as follows:

1. Elephant: Mauryan royal emblem of *three arched hill* with a crescent - 57 coins
2. Universal round coins with elephant rider: *Three arched hill* with a crescent - 2 coins
3. Universal square/rectangular without ladder: four symbols - 60 coins
4. Universal square/rectangular with ladder: four symbols - 48 coins
5. Universal square/rectangular with hollow cross: four symbols - 18 coins
6. Universal square/rectangular with bull in place of elephant: four symbols - 1 coin
7. Universal square/rectangular hybrid type - 5 coins

Total: 191

Unidentified and fragmentary pieces: 38

Lakshmi plaque/cast coin from Sri Lanka: 2

It is worth mentioning here that Ramachandran in his publication provided only the description of 250 coins from the Hamilton School collection, which includes early un-inscribed copper issues, two silver punch-marked coins, one copper punch-marked coin, and a lead issue (Ramachandran 1951, 233). The two silver *punch-marked* coins and the solitary copper punch-marked issue were probably discovered previously from Tamluk and were not a part of the hoard discovered from the Rupnarayan riverbank. The defaced lead coin mentioned in the list of 250 coins by Ramachandran is probably not a numismatic specimen, Fig.3. As already mentioned, the hoard consisted of some 350+ coins of which only 250 were chosen for publication which reflects that Ramachandran did not have access to the rest of the hoard which according to him went to the Indian Museum collection. How, when or if at all the partial hoard from the Rupnarayan bank went to the Indian Museum collection still remains an unsolved issue. The present authors requested the Indian Museum authorities to provide us with details of the partial transfer of the hoard as well as access to the coins of this hoard. The museum informed us that their collection contains no cast copper coins from Tamluk or its vicinity. This response adds further complexity to the issue. Since the Hamilton School has lost all its records in the flood this further complicates the issue of the present location of the partial hoard which was transferred from the school museum.

Though scholars like Dikshit, Ramachandran, and Roychowdhury all mention the Indian Museum as the final destination of the partial portion of the hoard, the accession records of the museum do not reflect any such acquisition. Although we currently lack conclusive evidence, it is possible that the coins were transferred to one of three local museums: the Gurusaday Dutt Museum in Behala; the Archaeological Survey of India Museum in Tamluk; or a local museum founded in 1948, which had some connection with Rishikesh Mukherjee (Roychowdhury 2018, 265). The present authors would like to name this hoard as the Hamilton-Rupnarayan hoard.

Before we delve into the issue of monetary history, we would like to discuss the Tamluk Hamilton Hoard in detail. Here we have appended a catalogue of all 234 coins (see Catalogue). The only pieces which needs to be discussed in detail is the two Sri Lankan Lakshmi plaques or cast copper coins which dates back to the first century BCE. Mitchiner takes these as contemporary to the Pandyan occupation in South India and the cast copper coins of North India (Bopearachchi 2015, 282, 323, and 390). Codrington's catalogue of Sri Lankan coins in the Colombo Museum mentions the plaques as both cast and die-struck. The discovery from Tamluk is a cast copper specimen.

On the obverse there is an image of a standing Lakṣmī. Usually, the goddess holds lotuses in her two hands but on our specimen it is not very clear. On the reverse we have identified a standard with svastika on the top and a *nandipada* on its right. The coin or plaque from Tamluk is partially broken but the obverse and reverse are intact as some of the plaques from Sri Lanka break open from the centre, with the obverse detached from reverse. Codrington observed that some of the cast plaques were cast separately and joined together, as a result of which some of the plaques have split in the middle



Fig.3: Lead coin mentioned by T.N. Ramachandran however, our understanding is that this is not a coin

(Codrington 1975, 26–31).

These plaques have been reported from various sites in Sri Lanka like Alutwatta, in the town of Chilaw; Thuparama and Kiribat Vehera at Anuradhapura; and Vallipuram and Kantarodai in Jaffna. In recent excavations done by Sri Lankan and British archaeologists at Salgaha Watta in the early citadel of Anuradhapura (ASW 2), 42 plaques were found from the last phase G5, out of which 26 were Lakshmi type. Bopearachchi points out that these plaques are the local issues of early Sri Lanka, and one such plaque was recovered from the riverbed of Amravati, near Karur, west of Kaveripattinam (Bopearachchi 2015, 323, 390, and 407).

Due to its geographical proximity, Sri Lanka had established close relations with the Indian subcontinent since the protohistoric and early historic periods. Strabo in his account mentions that the commander of the fleet of Alexander knew that ships came to North India from Sri Lanka, which he calculates to be approximately twenty days voyage away (Strabo, Geography, XV, 1, 15). It was from the time of Mauryan Emperor Ashoka (c.268–232 BCE) and Sri Lankan King *Devananpiya* Tissa (c.250–210 BCE), through the spread of Buddhism, that close political, economic and cultural relations was established between North India and Sri Lanka. In the recent excavations at the citadel of Anuradhapura, a large amount of Grey Ware and Northern Black Polished Ware was recovered in successive strata, which were imported from North India in the early historic period (Bopearachchi 2015, 279). Due to the impact of the maritime linkages between North India and Sri Lanka, a large number of imperial punch-marked coins were imported to the island. It is worth mentioning that several punch-marked coins have also been found from Sri Lanka which were sent from the Indian subcontinent. Most of them were corroded or highly corroded. Still, the supply could not meet the demand; the supply of coins was also affected by the fact that the Mauryan Empire began to decline. Sri Lanka started issuing their punch-marked coins using casting technique wherein original coins were used as dies and moulds were prepared. Many terracotta moulds of punch-marked coins (*karṣapaṇa*) were recovered from the excavation at Gedige and other places (Bopearachchi 2015, 280–81). Bopearachchi further mentions that C-14 dating done by Robin Conningham at ASW2 at Anuradhapura citadel shows that the punch-marked coins were in circulation from 275 BCE to 250 CE. The indigenous issues of Sri Lanka, i.e. the cast copper coins, were a result of the Indian influence and were contemporary to the early un-inscribed cast copper coins of North India.

To situate the coins in historical context, it is important to discuss the location of the site of Tamluk and its monetary scenario. 'Bengal' or undivided Bengal was never a composite socio-economic or political region before the Sultanate Period. State formation and the earliest circulation of 'money' can be traced in the northern part of Bengal to c. third century BCE (Basu Majumdar 2018, 233-68), due to the impact of Mauryan expansion or 'Secondary Urbanization'. At this time in the early historic period, one notices the emergence of five territorial units or sub-regions: Pundravardhana, Vanga, Radha, Suhma, and Samatata, all with their own distinctive socio-cultural,

political, and monetary positions. Literary sources are not unanimous about the inclusion of Tamralipta or its location within the broader sub-regional context; at times, we find it to be a part of Vanga janapada, and at others a part of Suhma. The earliest textual mention of Tamralipta appears in the *Shantiparvan* of the *Mahabharata*, listing it among the realms conquered by Bhīma alongside Paundra and Vanga (Bhattacharyya 1977, 46). As an administrative unit, the first reference to Tamralipta as a *vishaya* occurs in the non-canonical Jaina text, *Vasudevahindi* (Gangopadhyay 2018, 427). In early Buddhist literature, however, Tamralipta is mentioned as an ancient port, equated in antiquity with Pataliputra. The *Mahavamsa* (XIX. 5–6) notes that Emperor Ashoka dispatched a Bodhi tree sapling with Mahendra and Sanghamitra to Sri Lanka via Tamralipta in the third century BCE (Geiger 1912, xix, xvii and 128). Perhaps Tamralipta was the port that was alluded to in both *Milindapanha* and the *Mahanidessa*. On the other hand, the *Shankha Jataka*, *Samudra Jataka*, and *Mahajanaka Jataka* attest that traders from central India passed through Tamralipta enroute to their maritime voyages to Sri Lanka and Burma (Tripathi and Rao 1994, 35). The Jaina *Prajnapana* (fourth century CE) situates Tamralipta within the Vanga janapada as '*...Tamalitti Vamgaya*' (Smyth 1891, 375) whereas the *Raghuvamsa* of Kalidasa (fourth century CE) and Dandin's *Dashakumaracharita* (sixth century CE) refer to Tamralipta being a part of the larger Suhma territory (Bhattacharyya 1977, 46). Kalidasa situates the territory between the Bhagirathi and the Kansai rivers, extending southward to the sea, within the domain of the Suhmas, an area that encompassed Tamralipta. Similarly, Dandin refers to the city of 'Damalipata' (or Tamralipta) as a prosperous hub of commerce within Suhma. This raises an important question: how do these diverse sources contribute to our understanding of Tamralipta's geographical location?

As far as the foreign sources are concerned, Ptolemy in his *Geographike Huphegesis* (second century CE) mentions 'Tamalites', which beyond any doubt is the same as Tamralipta (Majumdar Sastri 2015, 167–68), which has been identified with modern Tamluk in Purba Medinipur. The surrounding fluvial network—including the Silai, Kamsavati, Kansai, and Mundesvari distributaries—reinforces the suitability of this region for port activity. Ptolemy's account places 'Tamalites' downstream from Palimbothra (Pataliputra), while Pliny's *Natural History* refers to the 'Taluctae', east of the Prasii (Gangopadhyay 2018, 428). Chinese texts from the third century CE mention a city called 'Tan-mei', likely a transliteration of Tamralipta, whose ruler reportedly sent emissaries to the Yellow Gate (Mukherjee 1990, 21). The *Shui-ching-chu* locates Tamralipta or 'Tan-mei' at the mouth of the Ganges, possibly along the earlier channels of the Bhagirathi–Rupnarayan system, and the *Fu-nan-chuan* claims the Ganges flowed through a city called 'Tamara' (Mukherjee 2004, 338).

Among the two distinct types of ports in ancient times, one may mention *pattana* and *dronimukha*. The former were typically located along the open seacoast, where ships could directly load and unload cargo, whereas in the latter case, the ports were situated at the confluence of river and sea, serving not only as maritime hubs but also as inland market towns. Tamralipta in the east and

Bharukaccha (*Barygaza*) in the west were among the most prominent *dronimukhas* in early India. In congruence, Dandin's *Dashakumaracharita* describes Tamralipta as a key emporium facilitating maritime trade with Sri Lanka, Suvarnavipa (Java), China, and the Yavana territories. Similar accounts appear in the *Brihatsamhita* and *Kathasaritsagara* (XIII.74), the latter mentioning a maritime route from Tamralipta to Kataha (modern Kedah on the west coast of the Malay Peninsula).

Regarding trade, indigenous texts remain vague, but the *Periplus* cites exports such as pearls, fine muslins, Gangetic spikenard, and *malabathrum* (Ramachandran 1951, 228). Other sources from around the first century CE indicate that items such as beads of semi-precious stone (produced by the bead-making industry at sites like Chandraketugarh, Deulpota, and Harinarayanpur etc.), jewellery, terracotta bangles, toys, as well as pearls and opaque glass, imported from the Pandyan Kingdom via Roman merchants, were exported to China and Southeast Asia (Mukherjee 2004, 338). Tamralipta was also a hub for the horse trade. The Chinese text *Liangshu* records 'During the epoch of the Wu dynasty in China (c. 220-280 CE) a King of Fu-nan (Cambodia) sent an envoy called Su-Wu to T'ien-chu (India). He first went from Fu-nan to the port of Chü-li (or T'ou-Chu-li) situated probably on the western coast of a portion of Malay peninsula now controlled by Thailand. From there by a sea-voyage directly to the north-west Su-Wu reached the mouth of the river of T'ien-chu. He returned with four horses of the Yüeh-chih country' (Mukherjee 2012, 70). The *T'ai-p'ingyü-lan* offers a detailed account of the sea-based horse trade, as 'The Yüeh-chih merchants are continually importing them (horses) to the Ko-ying country by sea (on ship). The king buys them all. If one (of the horses) is dead during the voyage and has to be helped by its man when it is shown to the king, the latter buys it at half-price' (Mukherjee 2012, 70). This leads us to question the procurement of the horses traded through Tamralipta. It is most likely that horses were brought from Central Asia via overland routes and brought to Tamralipta, from where they were shipped to various parts of East and South-East Asia. As corroborative evidence, Ranabir Chakravarti has drawn our attention to a seal discovered at Chandraketugarh, which bears the image of a horse aboard a ship (Chakravarti 1992, 155–59). Furthermore, B.N. Mukherjee has suggested that individuals from the north-western regions of the subcontinent may have migrated eastward and actively participated in the horse trade (Mukherjee 2012, 71).

The port seems to have lost its significance after the eighth century CE, as it does not receive much attention in literary sources. The Dudhpani rock inscription of the eighth century records the commercial arrival of three brothers from Ayodhya to Tamralipta, possibly marking the final phase before the decline of the port, likely precipitated by shifts in riverine courses (Kielhorn 1894, 344–45). Nonetheless, Tamralipta's faded glory seems to linger in the eleventh century lexicon *Abhidhanachintamani* by Hemacandra, which refers to it by various names such as 'Damalipta', 'Tamarinī', 'Stambhapura', and 'Vishnugriha' (Sircar 1985, 53). Even in the thirteenth century, an inscription found in Pegu refers to a Buddhist monk named Sivali Thera who journeyed from Tamalitti to South-East Asia, suggesting that although Indian sources remain silent after the eighth

century, the port may have continued to function, at least to a limited extent, until the thirteenth century (Gangopadhyay 2018, 429). By that time, however, the emergence of the port of Samandar had already eclipsed the former maritime prominence of Tamralipta.

The monetary scenario at this vibrant port located on the confluence of the Rupnarayan river and the Bay of Bengal would definitely have a brisk transactional history. Coins would have played an important role in the shaping of the economy of this region. As far as Bengal is concerned (undivided), there were three *janapadas* which issued their local punch-marked coinage between 3rd century BCE and 1st century CE. Basu Majumdar has discussed this in detail in a chapter on monetary history of Bengal (Basu Majumdar 2018, 233-68). She discusses about three indigenous coin issuing zones in undivided Bengal. These zones centered around Chandraketurgh complex, Wari Bateshwar (near Dhaka), and Dharas in the larger Tamralipta network. These three zones were located in three different *janapadas*. The coins were totally different from each other. The only hoard of local *punch-marked* coins of the *janapada* where the Tamralipta network was situated is reported from Dharas (Halder 2012-13, 37-41; Basu Majumdar 2014, 585-607; Basu Majumdar 2018, 233-68). However, it is unfortunate that till date no such punch-marked issue has been discovered from proper Tamluk. The port became extremely popular and significant not only due to the commodities mentioned above but also due to the horse trade, which connected the port with the north-western part of the Indian subcontinent on one hand and the peninsular south, especially the Malayaman territory, and also with South-East Asia on the other. Tamluk has yielded a large number of imperial punch-marked coins and also early un-inscribed cast copper coins, which directly indicates Mauryan control over this region. The supply of coins from Magadha was quite decent and met the local demand, and hence the tradition of minting local punch-marked coins in this region was discontinued. These coins need to be documented in detail, and the present publication is a step towards such documentation. A comprehensive study of the coins from Tamluk is extremely important, and the present authors would like to do so in the near future.

Comparative Catalogue (Based on Ramachandran's Documentation)

SI No.	Number of Coins mentioned by Ramachandran	Description of coins by Ramachandran	Remarks
1.	11	Uninscribed Cast Coins (I. M. C. pl. XXIII.3)	These are correctly identified, but the number of coins is 57 in our documentation, and it is not clear on what ground he has segregated 11 coins and 27 coins, as the reference for both are the same
2.	27	Uninscribed Cast Coins (I. M. C. pl. XXIII.3)	
3.	18	Uninscribed Cast Coins (Obv. Elephant moving left with rider (?))	We have identified only 2 coins of this variety in the collection.
4.	1	Uninscribed Cast Coins (Elephant moving right)	We could not identify any coin of this variety in the collection

5.	1	Uninscribed Cast Coins (Obv. And Rev. not clear)	Not clear
6.	39	Uninscribed Cast Coins (B. M. C. Ancient India, pl. XI.17; p. 88)	Ramachandran mentions B. M. C. Ancient India, pl. XI.17, p. 88 as the reference to these coins, which are 39 in number. However, we would like to point out that plate XI. 17 is 'variety n' of Allan's Catalogue (BMC) which portrays EUCC coins bearing the hollow cross on the obverse and tree-in-railing on the reverse. Whereas the page number mentioned by Ramachandran is 88, which does not confirm to this variety. It refers to coins of 'variety j' which has five symbols elephant, <i>indradvaja</i> , svastika, taurine, and ladder on the obverse and tree-in-railing, hollow cross, <i>three arched hill</i> with crescent, and taurine on the reverse. This is a discrepancy that needs to be sorted out.
7.	15	Uninscribed Cast Coins (B. M. C. Ancient India, pl. XI.11; P. 87)	Ramachandran mentions B. M. C. Ancient India, pl. XI.11, p. 87 as the reference to these coins, which are 15 in number. However, we would like to point out that plate XI. 11 is 'variety k' which has four symbols elephant, <i>indradvaja</i> , svastika, taurine on the obverse and four on the reverse i.e. tree-in-railing, hollow cross, three arched hill with crescent and taurine. Whereas the page number mentioned by Ramachandran is 87, which does not confirm to this variety. It refers to coins of 'variety i' of Allan's Catalogue (BMC) which portrays EUCC coins bearing four symbols on the obverse, i.e. elephant, <i>indradvaja</i> , svastika, and hollow cross, and four on the reverse, viz. tree-in-railing, taurine, <i>three arched hill</i> with crescent and <i>indradvaja</i> . According to our documentation, there is only one set of coins which are 18 in number and belong to variety i. Hence, we cannot identify this category mentioned by Ramachandran.
8.	68	Uninscribed Cast Coins (B. M. C. Ancient India, pl. XI.11, p. 89)	These probably are the square or rectangular EUCC without a ladder, but the number of such coins according to our documentation is 60.

9.	58	Uninscribed Cast Coins (B. M. C. Ancient India, Part III) Proper description not possible, the coins being damaged and defaced.	Not clear
10.	8	Defaced Coins	We have documented 38 coins, which are in the category of unidentified (27 coins) and coin fragments (11). Total 38 coins in our catalogue.
11.	1	Lead	Probably not a coin

Acknowledgement

The authors would like to thank the faculty and staff of Hamilton High School, Tamluk, Purba Medinipur for their co-operation and enthusiastic support without which this article would not have taken shape. Special thanks to Mr. Madhusudan Jana, Headmaster, Hamilton High School, for granting us permission to document the coin hoard housed at their Museum and we would also like to extend our sincere gratitude to Mr. Surjendu Mishra and Mr. Ritwik Roy for their sustained engagement and invaluable co-operation throughout the course of the documentation. We would like to thank Indian Museum for confirming the non-availability of coins of Tamluk in their collection. Special thanks to Dr. Sayan Bhattacharya and Dr. Satyakam Sen. We would also like to extend special thanks to Mr. Soumendu Mangal for helping us in editing and designing the plates.

Notes

¹ The present authors have documented the coins and helped the school authorities to prepare a proper accession register.

² Early Un-inscribed Cast Copper Coins 11 (IMC Plate XXIII.3)+ 27 (IMC Plate XXIII.3) + 18 (elephant to left with rider) + 1 (elephant to right) + 1 (not clear)+ 39 (BMC, Ancient India, Plate XI.17, p.88)+ 15 (BMC, Ancient India, Plate XI.11, p.87)+ 68 (BMC, Ancient India, Plate XI.11, p.89)+ 58 (BMC, Ancient India, Part III)+ 8(Defaced Coins) +1 (Lead Coin).

³ Although after his death, Mukherjee's family reportedly donated his collection to the Tamralipta Research Collection at Hamilton School.

Bibliography

- Basu Majumdar, Susmita. 2014. Monetary History of Bengal: 'Issues and Non-Issues'. In D.N. Jha, ed., *The Complex Heritage of Early India: Essays in Memory of R. S. Sharma*. New Delhi: Manohar.
- . 2018. Media of Exchange: Reflections on the Monetary History. In Abdul Momin Chowdhury and Ranabir Chakravarti, eds, *History of Bangladesh: Early Bengal in Regional Perspectives (up to c. 1200 CE)*. Dhaka: Asiatic Society of Bangladesh.
- Bhattacharya, Amitabha. 1977. *Historical Geography of Ancient and Mediaeval Bengal*. Calcutta: Sanskrit Pustak Bhandar.
- Bopearachchi, Osmund. 2015. *From Bactria to Taprobane: Selected Works of Osmund Bopearachchi*, Vol. II (Art History and Maritime Trade). New Delhi: Manohar.
- Bysack, Gaurdas. 1888. Note on Some Buddhist Copper Coins, and a Terra-cotta Figure. *Proceedings of the Asiatic Society of Bengal*.
- Codrington, H.W. [1924] 1975. Ceylon: Coins and Currency. In Joseph Pearson, ed., *Memoirs of the Colombo Museum*, Series A., No. 3. Colombo: A.C. Richards, Acting Government Printer.
- Chakravarti, Ranabir. 1992. Maritime Trade in Horses in Early Historic Bengal: A Seal from Chandraketurgarh. *Pratna-Samiksha* 1.
- Chattopadhyay, Rupendra Kumar. 2018. *The Archaeology of Coastal Bengal*. New Delhi: Oxford University Press.
- Dikshit, K.N. Tamluk. In D. Brainerd Spooner, ed., *Annual Report of Archaeological Survey of India 1921-22*. Shimla: Government of India Press.
- Gangopadhyay, Kaushik. 2018. Tamluk. In Abdul Momin Chowdhury and Ranabir Chakravarti, eds, *History of Bangladesh: Early Bengal in Regional Perspectives (up to c. 1200 CE)*. Dhaka: Asiatic Society of Bangladesh.

- Geiger, Wilhem, trans. 1912. *The Mahavamsa or The Great Chronicle of Ceylon*. London: Oxford University Press.
- Halder, Smita. 2012–13. Punchmarked Coins in the Rajanikanta Jnana Mandir: A Rural Museum in West Bengal. In *Numismatic Digest* 36–37.
- Kielhorn, F. 1894. Dudhpani Rock Inscription of Udayaman. *Epigraphia Indica* II.
- Middya, Debisankar. 2022. *Jatar Deul: Lokakatha o Pratnatattva*. Kolkata: Parallel.
- Mitchiner Michael. 2000. *The Land of Water: Coinage and History of Bangladesh and Later Arakan, Circa 300BC to the Present Day*. London: Hawkins Publication, p.28.
- Mukherjee, B.N. 1990. Kharosthi and Karoshthi-Bramhi Inscriptions in West Bengal (India). *Indian Museum Bulletin* XXV.
- . 2004. *Kushana Studies: New Perspectives*. Kolkata: Firma KL Private Limited.
- . 2012. *Coin and Currency Systems of Early Bengal up to c. A.D. 300*. Kolkata: Progressive Publishers.
- Ramachandran, T.N. 1951. Tamralipti (Tamluk). *Artibus Asiae* 14 (3).
- Roy, Amal. 2006. Early Historic Settlement in Piyali Valley: A Preliminary Report on Excavation at Dhosha and Tilpi. *Nimna Gangeya Sundarban Sanskriti Patra* 8.
- Roychowdhury, Madhuparna. 2018. *Displaying India's Heritage: Archaeology and the Museum Movement in Colonial India*. Telangana: Orient Blackswan.
- Sastri, Surendranath Majumdar, ed. 2015. *Mc. Griddle's Ancient India as described by Ptolemy*. New Delhi: Munshiram Manohar Publishers Pvt. Ltd.
- Sarkar, Tusar, ed. 2023. *Acharya Jogesh Chandra Purakriti Bhawan Museum Catalogue*. Bishnupur: Acharya Jogesh Chandra Purakriti Bhawan.
- Sircar, Dinesh Chandra. 1985. *Pala-purvajuger Vamshanucharita*. Kolkata: Sahityalok.
- Smyth, Herbert Weir. 1891. Weber's Sacred Literature of the Jains. *The Indian Antiquary: A Journal of Oriental Research* XX.
- Tripati, Sila and S.R. Rao. 1994. Tamralipti: The Ancient Port of India. *Studies in History and Culture* 2 (1).

Catalogue of Hamilton School Museum Collection of Punch-Marked Coins and Early Un-inscribed Cast Copper Coins Unearthed from Tamluk, West Bengal

Catalogue of Punch-Marked Coins Found from Tamluk

Imperial Type (Silver Punch-Marked Coins)

Sl No.	Accession No.	Weight (in g)	Size (in mm)	Obverse and Reverse	Gupta-Hardaker No.
1	TAMHSSPMC01	1.38 g	15.59 x 11.73 mm	Highly corroded on both sides, but in reverse two symbols are identified, and one of them is the tree-in-railing.	Series V or VI (?)
2	TAMHSSPMC02	2.58 g	13.35 x 12.28 mm	Obverse: Sun, Six-armed, Detached three arches in a baseline, Dog with puppy, and Tree-in-railing with seven branches. Reverse: Three-arched hill with crescent on top.	Series Va, No. 483

Janapada Type (Copper Punch-Marked Coin)

SL No.	Accession No.	Weight (in g)	Size (in mm)	Obverse and Reverse
1	TAMHSCPMC01	1.31 g	13.62 x 10.09 mm	Highly corroded on both sides.

Catalogue of Early Un-inscribed Cast Copper Coins Found from Tamluk

Type 1: Universal Round with Elephant

Obverse

Elephant moving left.

Reverse

Three arched hill with crescent on top.

Sl No.	Accession No.	Weight (in g)	Size (in mm)
1.	TAMHSEUCC001	1.68 g	5.35 mm (with channel 6.60 mm)
2.	TAMHSEUCC002	1.86 g	12.72 mm (with channel 14.50 mm)
3.	TAMHSEUCC003	1.38 g	11.95 mm (with channel 15.54 mm)
4.	TAMHSEUCC004	1.65 g	11.82 mm (with channel 15.15 mm)
5.	TAMHSEUCC005	1.89 g	12.98 mm (with channel 15.87 mm)
6.	TAMHSEUCC006	1.37 g	12.20 mm (with channel 14.70 mm)
7.	TAMHSEUCC007	1.27 g	12.43 mm (with channel 14.04 mm)
8.	TAMHSEUCC008	2.22 g	12.86 mm (with channel 15.86 mm)
9.	TAMHSEUCC009	1.36 g	11.67 mm (with channel 14.45 mm)
10.	TAMHSEUCC010	1.88 g	13.91 mm (with channel 14.94 mm)
11.	TAMHSEUCC011	1.75 g	12.52 mm (with channel 14.11 mm)
12.	TAMHSEUCC012	1.44 g	11.95 mm (with channel 16.69 mm)
13.	TAMHSEUCC013	1.81 g	12.27 mm (with channel 15.40 mm)
14.	TAMHSEUCC014	2.80 g	12.54 mm (with channel 13.39 mm)
15.	TAMHSEUCC015	1.39 g	12.47 mm (with channel 15.06 mm)
16.	TAMHSEUCC131	2.43 g	12.77 mm (with channel 17.51 mm)
17.	TAMHSEUCC132	1.55 g	12.77 mm (with channel 14.20 mm)
18.	TAMHSEUCC133	2.52 g	13.03 mm (with channel 13.88 mm)
19.	TAMHSEUCC134	1.23 g	12.60 mm (with channel 14.70 mm)
20.	TAMHSEUCC135	2.17 g	13.73 mm (with channel 15.82 mm)
21.	TAMHSEUCC190	2.16 g	13.32 mm (with channel 14.46 mm)
22.	TAMHSEUCC191	1.58 g	12.52 mm (with channel 16.28 mm)
23.	TAMHSEUCC192	1.58 g	12.01 mm (with channel 14.94 mm)
24.	TAMHSEUCC194	3.05 g	13.51 mm (with channel 15.29 mm)
25.	TAMHSEUCC195	2.17 g	12.93 mm (with channel 16.98 mm)
26.	TAMHSEUCC196	2.12 g	13.33 mm (with channel 15.26 mm)
27.	TAMHSEUCC197	1.24 g	12.45 mm (with channel 13.71 mm)
28.	TAMHSEUCC198	1.65 g	13.38 mm (with channel 13.86 mm)
29.	TAMHSEUCC016	1.52 g	11.86 mm
30.	TAMHSEUCC017	1.81 g	13.73 mm
31.	TAMHSEUCC018	1.37 g	14.25 mm
32.	TAMHSEUCC019	1.09 g	12.28 mm
33.	TAMHSEUCC020	0.95 g	13.43 mm
34.	TAMHSEUCC021	1.08 g	13.04 mm
35.	TAMHSEUCC022	1.68 g	14.60 mm
36.	TAMHSEUCC023	1.72 g	13.04 mm
37.	TAMHSEUCC024	1.75 g	12.39 mm
38.	TAMHSEUCC025	1.67 g	11.81 mm
39.	TAMHSEUCC026	2.05 g	13.66 mm
40.	TAMHSEUCC027	1.90 g	13.31 mm
41.	TAMHSEUCC136	1.32 g	13.04 mm
42.	TAMHSEUCC137	1.42 g	13.46 mm
43.	TAMHSEUCC138	1.29 g	12.77 mm

44.	TAMHSEUCC139	0.88 g	13.11 mm
45.	TAMHSEUCC140	0.94 g	11.95 mm
46.	TAMHSEUCC141	1.35 g	11.66 mm
47.	TAMHSEUCC142	1.45 g	13.32 mm
48.	TAMHSEUCC143	1.06 g	11.29 mm
49.	TAMHSEUCC144	1.48 g	9.48 mm
50.	TAMHSEUCC199	1.42 g	12.70 mm
51.	TAMHSEUCC200	1.72 g	12.34 mm
52.	TAMHSEUCC201	1.73 g	12.50 mm
53.	TAMHSEUCC202	1.18 g	12.82 mm
54.	TAMHSEUCC203	1.92 g	13.48 mm
55.	TAMHSEUCC037	1.55 g	14.78 x 12.75 mm
56.	TAMHSEUCC056	2.21 g	14.91 x 13.44 mm
57.	TAMHSEUCC058	1.65 g	14.20 x 11.65 mm

Type 2: Universal Round with Elephant Rider

Obverse

Elephant with a rider moving left.

Reverse

Three arched hill with crescent on top.

Sl No.	Accession No.	Weight (in g)	Size (in mm)
1.	TAMHSEUCC130	1.55 g	11.53 mm (with channel 17.54 mm)
2.	TAMHSEUCC193	2.20 g	12.89 mm (with channel 15.47 mm)

Type 3: Universal Square/ Rectangular without Ladder

Obverse

Elephant moving left, Taurine on left, Svastika and *Indradhvaja* below.

Reverse

Tree-in-railing at right, *Three arched hill* with crescent on top at upper left, Hollow cross at below left, and Taurine in between *Three arched hill* and Tree-in-railing.

Sl No.	Accession No.	Weight (in g)	Size (in mm)
1.	TAMHSEUCC049	1.46 g	13.45 x 12.74 mm (with channel)
2.	TAMHSEUCC094	1.34 g	15.75 x 12.24 mm (with channel)
3.	TAMHSEUCC108	2.58 g	14.96 x 14.25 mm (with channel)
4.	TAMHSEUCC145	3.41 g	14.97 x 13.98 mm (with channel)
5.	TAMHSEUCC147	3.09 g	14.71 x 14.30 mm (with channel)
6.	TAMHSEUCC032	2.19 g	16.80 x 12.61 mm
7.	TAMHSEUCC033	1.50 g	14.97 x 13 mm
8.	TAMHSEUCC041	1.16 g	15.41 x 13.12 mm
9.	TAMHSEUCC044	2.11 g	16.69 x 12.78 mm

10.	TAMHSEUCC047	1.59 g	16.80 x 8.95 mm
11.	TAMHSEUCC048	3 g	15.01 x 14.80 mm
12.	TAMHSEUCC050	2.10 g	14.28 x 13.10 mm
13.	TAMHSEUCC052	1.09 g	12.52 x 12.19 mm
14.	TAMHSEUCC054	2.77 g	18.08 x 10.58 mm
15.	TAMHSEUCC055	2.32 g	15.45 x 13.62 mm
16.	TAMHSEUCC062	1.05 g	13.91 x 13.52 mm
17.	TAMHSEUCC067	2.57 g	15.13 x 14.61 mm
18.	TAMHSEUCC068	1.60 g	14.30 x 14.14 mm
19.	TAMHSEUCC072	4.20 g	14.30 x 14.22 mm
20.	TAMHSEUCC075	2.14 g	13.87 x 13.69 mm
21.	TAMHSEUCC078	2.09 g	15.64 x 13.32 mm
22.	TAMHSEUCC079	2.83 g	15.54 x 15.52 mm
23.	TAMHSEUCC080	2.57 g	14.58 x 12.95 mm
24.	TAMHSEUCC081	1.09 g	12.63 x 12.40 mm
25.	TAMHSEUCC086	2.78 g	14.37 x 13.47 mm
26.	TAMHSEUCC087	1.17 g	14.17 x 13.97 mm
27.	TAMHSEUCC089	2.37 g	15.47 x 14.04 mm
28.	TAMHSEUCC090	2.27 g	15.83 x 14.51 mm
29.	TAMHSEUCC092	1.00 g	12.66 x 10.39 mm
30.	TAMHSEUCC095	1.41 g	12.78 x 12.51 mm
31.	TAMHSEUCC096	3.25 g	14.93 x 14.21 mm
32.	TAMHSEUCC097	2.64 g	15.65 x 14.07 mm
33.	TAMHSEUCC098	3.74 g	15.70 x 15.34 mm
34.	TAMHSEUCC113	3.45 g	15.61 x 15.15 mm
35.	TAMHSEUCC116	2.11 g	14.78 x 13.51 mm
36.	TAMHSEUCC117	1.71 g	13.98 x 12.61 mm
37.	TAMHSEUCC120	2.69 g	15.06 x 14.49 mm
38.	TAMHSEUCC121	2.12 g	14.91 x 14.04 mm
39.	TAMHSEUCC146	2.46 g	14.37 x 13.34 mm
40.	TAMHSEUCC148	2.17 g	14.84 x 13.71 mm
41.	TAMHSEUCC154	1.60 g	13.53 x 12.57 mm
42.	TAMHSEUCC156	3.11 g	14.41 x 13.91 mm
43.	TAMHSEUCC158	1.71 g	14.89 x 13.87 mm
44.	TAMHSEUCC160	1.23 g	14.87 x 13.39 mm
45.	TAMHSEUCC161	2.60 g	14.50 x 13.94 mm
46.	TAMHSEUCC162	2.98 g	14.87 x 14.43 mm
47.	TAMHSEUCC163	3.33 g	14.48 x 14 mm
48.	TAMHSEUCC167	0.69 g	12.86 x 9.57 mm
49.	TAMHSEUCC170	0.62 g	11.23 x 9.25 mm
50.	TAMHSEUCC172	1.28 g	13.58 x 8.01 mm
51.	TAMHSEUCC182	2.59 g	15.10 x 14.15 mm
52.	TAMHSEUCC183	2.47 g	15.45 x 13.69 mm
53.	TAMHSEUCC186	1.76 g	14.02 x 13.70 mm
54.	TAMHSEUCC209	2.80 g	15.76 x 14.98 mm
55.	TAMHSEUCC211	3.65 g	16.39 x 15.27 mm
56.	TAMHSEUCC213	2.54 g	16.45 x 14.16 mm
57.	TAMHSEUCC219	2.02 g	14.99 x 13.56 mm

58.	TAMHSEUCC223	3.05 g	16.10 x 13.30 mm
59.	TAMHSEUCC224	1.77 g	14.15 x 13.65 mm
60.	TAMHSEUCC225	2.44 g	14.15 x 14.02 mm

Type 4: Universal Square/ Rectangular with Ladder

Obverse

Elephant moving left,
Indradhvaja at left corner,
Svastika and Taurine above on left
and Ladder below.

Reverse

Tree-in-railing at right, *Three arched hill*
with crescent on top at upper left, Hollow
cross at below left, and Taurine in
between *Three arched hill* and Tree-in-
railing.

SL No.	Accession No.	Weight (in g)	Size (in mm)
1.	TAMHSEUCC077	1.24 g	13.79 x 12.15 mm (with channel)
2.	TAMHSEUCC151	2.16 g	16.22 x 14.38 mm (with channel)
3.	TAMHSEUCC035	1.76 g	12.92 x 12.87 mm
4.	TAMHSEUCC036	1.62 g	13.75 x 11.92 mm
5.	TAMHSEUCC038	2.15 g	14.56 x 12.83 mm
6.	TAMHSEUCC040	1.33 g	16.23 x 9.49 mm
7.	TAMHSEUCC043	2.51 g	13.95 x 13.48 mm
8.	TAMHSEUCC045	2.61 g	14.98 x 14.78 mm
9.	TAMHSEUCC061	2.20 g	16.69 x 12.84 mm
10.	TAMHSEUCC063	1.47 g	15.28 x 12.38 mm
11.	TAMHSEUCC064	1.86 g	14.43 x 14.08 mm
12.	TAMHSEUCC069	2.26 g	16.03 x 12.51 mm
13.	TAMHSEUCC070	1.75 g	13.93 x 12.11 mm
14.	TAMHSEUCC071	1.85 g	14.42 x 13.50 mm
15.	TAMHSEUCC083	1.75 g	12.43 x 12.41 mm
16.	TAMHSEUCC088	3.22 g	15.62 x 13.78 mm
17.	TAMHSEUCC093	2.00 g	17.60 x 13.74 mm
18.	TAMHSEUCC102	2.36 g	15.73 x 14.61 mm
19.	TAMHSEUCC103	2.10 g	13.76 x 13.31 mm
20.	TAMHSEUCC104	2.07 g	14.10 x 12.96 mm
21.	TAMHSEUCC106	2.54 g	14.29 x 14.06 mm
22.	TAMHSEUCC107	2.39 g	14.50 x 13.47 mm
23.	TAMHSEUCC110	2.14 g	14.28 x 12.46 mm
24.	TAMHSEUCC111	1.48 g	13.35 x 12.10 mm
25.	TAMHSEUCC115	1.68 g	12.93 x 12.68 mm
26.	TAMHSEUCC118	2.65 g	13.50 x 12.95 mm
27.	TAMHSEUCC124	1.21 g	12.31 x 10.90 mm
28.	TAMHSEUCC125	2.56 g	14.96 x 14.83 mm
29.	TAMHSEUCC149	1.67 g	13.20 x 12.47 mm
30.	TAMHSEUCC150	2.34 g	16.14 x 13.80 mm
31.	TAMHSEUCC152	2.82 g	14.78 x 14.62 mm
32.	TAMHSEUCC153	2.39 g	14.25 x 14.14 mm
33.	TAMHSEUCC155	2.20 g	13.83 x 13.13 mm
34.	TAMHSEUCC157	3.09 g	15.50 x 14.05 mm

35.	TAMHSEUCC159	1.90 g	15.16 x 14.26 mm
36.	TAMHSEUCC164	1.49 g	13.14 x 12.80 mm
37.	TAMHSEUCC168	2.13 g	15.19 x 15.04 mm
38.	TAMHSEUCC171	1.22 g	13.05 x 13.02 mm
39.	TAMHSEUCC174	2.05 g	14.56 x 13.90 mm
40.	TAMHSEUCC176	1.82 g	13.40 x 12.32 mm
41.	TAMHSEUCC180	1.83 g	15.15 x 13.90 mm
42.	TAMHSEUCC181	1.65 g	16.92 x 11.57 mm
43.	TAMHSEUCC185	1.44 g	14.61 x 13.07 mm
44.	TAMHSEUCC188	2.02 g	13.55 x 12.56 mm
45.	TAMHSEUCC212	3.63 g	16.35 x 15.24 mm
46.	TAMHSEUCC214	2.72 g	14.62 x 14.15 mm
47.	TAMHSEUCC215	2.35 g	16.25 x 13.88 mm
48.	TAMHSEUCC216	2.58 g	15.19 x 14.07 mm
49.	TAMHSEUCC217	3.59 g	17.45 x 13.77 mm
50.	TAMHSEUCC218	2.69 g	15.35 x 14.90 mm
51.	TAMHSEUCC220	2.64 g	15.11 x 14.80 mm
52.	TAMHSEUCC226	3.19 g	17.88 x 15.26 mm

Type 5: Universal Square/Rectangular with Hollow Cross

Obverse

Indradhvaja on left, Elephant moving left, and Hollow cross on top right.

Reverse

Tree-in-railingat left, *Three arched hill* with crescent on top and *Indradhvaja* in right, and Taurine in between Tree-in-railing and *Three arched hill*.

SI No.	Accession No.	Weight (in g)	Size (in mm)
1.	TAMHSEUCC101	1.84 g	13.31 x 12.73 mm (with channel)
2.	TAMHSEUCC177	3.27 g	14.83 x 14.02 mm (with channel)
3.	TAMHSEUCC189	2.42 g	15.21 x 12.86 mm (with channel)
4.	TAMHSEUCC042	1.21 g	12.64 x 11.97 mm
5.	TAMHSEUCC060	1.75 g	16.71 x 13.21 mm
6.	TAMHSEUCC074	1.08 g	10.76 x 10.39 mm
7.	TAMHSEUCC084	1.48 g	14.14 x 13.20 mm
8.	TAMHSEUCC085	2.06 g	13.92 x 13.87 mm
9.	TAMHSEUCC166	1.02 g	12.14 x 12.07 mm
10.	TAMHSEUCC173	2.54 g	14.92 x 13.33 mm
11.	TAMHSEUCC184	2.07 g	14.91 x 13.57 mm
12.	TAMHSEUCC207	1.36 g	13.24 x 12.24 mm
13.	TAMHSEUCC208	3 g	15.36 x 14.36 mm
14.	TAMHSEUCC221	3.01 g	15.78 x 14.78 mm
15.	TAMHSEUCC222	4.01 g	15.65 x 15.26 mm
16.	TAMHSEUCC030	1.70 g	15.81 mm
17.	TAMHSEUCC106	2.54 g	14.29 x 14.06 mm
18.	TAMHSEUCC149	1.67 g	13.20 x 12.47 mm

Type 6: Universal Square/Rectangular with Bull in Place of Elephant

Obverse

Bull moving left, in front of
Indradhvaja (?).

Reverse

Tree-in-railingat right, but other symbols
are unidentified.

Sl No.	Accession No.	Weight (in g)	Size (in mm)
1.	TAMHSEUCC206	2.15 g	14.76 x 13.59 mm

Type 7: Universal Square/Rectangular Hybrid Type

Obverse

Indradhvaja on left, Elephant
moving left, and Hollow cross on
top right (?).

Reverse

Tree-in-railing at left, *Three arched hill*
with crescent on top at right and Hollow
Cross in right below, and Taurine in
between Tree-in-railing and *Three arched hill*

Sl No.	Accession No.	Weight (in g)	Size (in mm)
1.	TAMHSEUCC169	0.78 g	13.27 x 10.84 mm (with channel)
2.	TAMHSEUCC104	2.07 g	14.10 x 12.96 mm

Obverse

Elephant moving left, Taurine on
left, Svastika and *Indradhvaja*
below.

Reverse

Tree-in-railin gat left, *Three arched hill*
with crescent on top and *Indradhvaja* in
right, and Taurine in between Tree-in-
railing and *Three arched hill*

Sl No.	Accession No.	Weight (in g)	Size (in mm)
1.	TAMHSEUCC179	3.41 g	17.81 x 13.89 mm

Obverse

Indradhvaja on left, Elephant
moving left, and one *dhvaja* also
on right.

Reverse

Tree-in-railingat right, but other symbols
are unidentified.

Sl No.	Accession No.	Weight (in g)	Size (in mm)
1.	TAMHSEUCC210	2.93 g	18.15 x 13.85 mm

Obverse

Indradhvaja on left
Elephant moving left

Reverse

Indradhvaja on left (?)
Elephant moving left

Sl. No.	Accession No.	Weight (in g)	Size (in mm)
1.	TAMHESUCC035	1.76 g	12.92 x 12.87 mm

Coin And Pottery Fragments

Sl No.	Accession No.	Weight (in g)	Size (in mm)
1.	TAMHSEUCC109	1.87 g	16.96 x 12.56 mm
2.	TAMHSEUCC122	1.36 g	12.96 x 10.47 mm
3.	TAMHSEUCC175	0.86 g	11.52 x 10.68 mm
4.	TAMHSEUCC127(?)	1.41 g	(?)
5.	TAMHSEUCC128	0.43 g	(?)
6.	TAMHSEUCC129	0.37 g	(?)
7.	TAMHSEUCC227	(?)	(?)
8.	TAMHSEUCC228	(?)	(?)
9.	TAMHSEUCC229	(?)	(?)
10.	TAMHSEUCC230	(?)	(?)
11.	TAMHSEUCC231	(?)	(?)

Unidentified Coins

Sl No.	Accession No.	Weight (in g)	Size (in mm)
1.	TAMHSEUCC205	1.95 g	16.21 x 13.25 mm (with channel)
2.	TAMHSEUCC031	1.61 g	13.42 x 12.89 mm
3.	TAMHSEUCC034	2.65 g	16.03 x 14.45 mm
4.	TAMHSEUCC039	0.92 g	13.12 x 10.53 mm
5.	TAMHSEUCC051	2.12 g	15.25 x 14.07 mm
6.	TAMHSEUCC053	2.79 g	15.57 x 12.73 mm
7.	TAMHSEUCC057	1.62 g	12.75 x 10.35 mm
8.	TAMHSEUCC059	1.54 g	15.61 x 14.15 mm
9.	TAMHSEUCC065	2.25 g	13.45 x 12.70 mm
10.	TAMHSEUCC066	2.23 g	14.31 x 13.28 mm
11.	TAMHSEUCC073	2.31 g	15.83 x 14.42 mm
12.	TAMHSEUCC076	1.50 g	12.53 x 12.06 mm
13.	TAMHSEUCC082	1.66 g	14.28 x 13.05 mm
14.	TAMHSEUCC091	1.37 g	12.53 x 11.40 mm
15.	TAMHSEUCC099	2.20 g	17.47 x 13.81 mm
16.	TAMHSEUCC100	1.82 g	15.64 x 11.56 mm
17.	TAMHSEUCC105	1.72 g	12.71 x 12.62 mm
18.	TAMHSEUCC112	2.77 g	13.77 x 12.83 mm
19.	TAMHSEUCC114	2.37 g	15.02 x 13.55 mm
20.	TAMHSEUCC119	1.66 g	14.20 x 13.41 mm
21.	TAMHSEUCC123	1.94 g	15.20 x 13.10 mm
22.	TAMHSEUCC126	1.31 g	13.71 x 13.70 mm
23.	TAMHSEUCC165	2.05 g	15.83 x 12.62 mm
24.	TAMHSEUCC178	0.77 g	12.06 x 09.38 mm
25.	TAMHSEUCC187	1.04 g	13.25 x 10.97 mm
26.	TAMHSEUCC204	1.32 g	14.62 x 13.73 mm
27.	TAMHSEUCC028	2.15 g	15.76 mm
28.	TAMHSEUCC029	1.35 g	14.76 mm

Sri Lankan Connection: Oblong Cast Lakṣmī (?) Plaque

Obverse

Lakṣmī (?) is standing with two lotuses in her two hands.

Reverse

A standard with svastika on the top and a *nandipada* on its right.

SI No.	Accession No.	Weight (in g)	Size (in mm)
1.	TAMHSEUCC046	0.66 g	12.17 x 10.06 mm
2.	TAMHSEUCC053	2.79 g	15.57 x 12.73 mm

Plates of Hamilton-Rupnarayan Hoard of Punch-marked and Early Un-inscribed Cast Copper Coins

Plate I

(Silver Punch-marked Coins)



(Copper Punch-marked Coin)

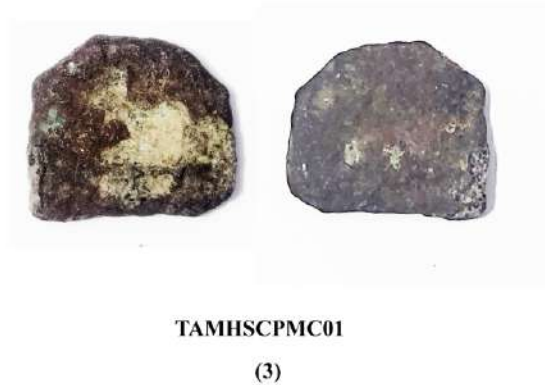


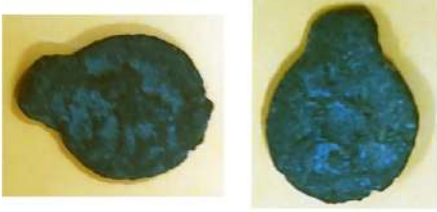
Plate II
Type 1: Universal Round
(with channel)



TAMHSEUCC001
(1)



TAMHSEUCC002
(2)



TAMHSEUCC003
(3)



TAMHSEUCC004
(4)



TAMHSEUCC005
(5)



TAMHSEUCC006
(6)



TAMHSEUCC007
(7)



TAMHSEUCC008
(8)

Plate III



TAMHSEUCC009
(9)



TAMHSEUCC010
(10)



TAMHSEUCC011
(11)



TAMHSEUCC012
(12)



TAMHSEUCC013
(13)



TAMHSEUCC014
(14)



TAMHSEUCC015
(15)



TAMHSEUCC131
(16)



Plate IV



TAMHSEUCC132

(17)



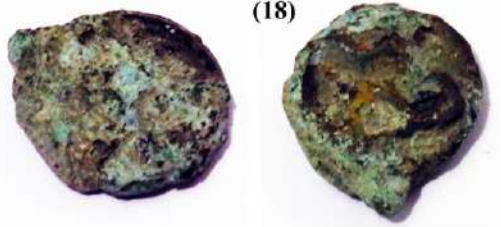
TAMHSEUCC133

(18)



TAMHSEUCC134

(19)



TAMHSEUCC135

(20)



TAMHSEUCC190

(21)



TAMHSEUCC191

(22)



TAMHSEUCC192

(23)



TAMHSEUCC194

(24)



TAMHSEUCC195

(25)



TAMHSEUCC196

(26)

Plate V



TAMHSEUCC197

(27)



TAMHSEUCC198

(28)

(without Channel)



TAMHSEUCC016

(29)



TAMHSEUCC017

(30)



TAMHSEUCC018

(31)



TAMHSEUCC019

(32)



TAMHSEUCC020

(33)



TAMHSEUCC021

(34)

Plate VI



TAMHSEUCC022

(35)



TAMHSEUCC023

(36)



TAMHSEUCC024

(37)



TAMHSEUCC025

(38)



TAMHSEUCC026

(39)



TAMHSEUCC027

(40)



TAMHSEUCC037

(41)



TAMHSEUCC056

(42)



TAMHSEUCC058

(43)

Plate VII



TAMHSEUCC136

(44)



TAMHSEUCC137

(45)



TAMHSEUCC138

(46)



TAMHSEUCC139

(47)



TAMHSEUCC140

(48)



TAMHSEUCC141

(49)



TAMHSEUCC142

(50)



TAMHSEUCC143

(51)



TAMHSEUCC144

(52)



TAMHSEUCC199

(53)

Plate VIII



TAMHSEUCC200

(54)



TAMHSEUCC201

(55)



TAMHSEUCC202

(56)



TAMHSEUCC203

(57)

**Type 2: Universal Round with Elephant Rider
(with Channel)**



TAMHSEUCC130

(1)



TAMHSEUCC193

(2)

Plate IX
Type 3: Universal Square/ Rectangular without ladder
(with Channel)



TAMHSEUCC049

(1)



TAMHSEUCC094

(2)



TAMHSEUCC108

(3)



TAMHSEUCC145

(4)



TAMHSEUCC147

(5)

(without Channel)



TAMHSEUCC032

(6)



TAMHSEUCC033

(7)

Plate X



TAMHSEUCC041

(8)



TAMHSEUCC044

(9)



TAMHSEUCC047

(10)



TAMHSEUCC048

(11)



TAMHSEUCC050

(12)



TAMHSEUCC052

(13)



TAMHSEUCC054

(14)



TAMHSEUCC055

(15)



TAMHSEUCC062

(16)



TAMHSEUCC067

(17)

Plate XI



TAMHSEUCC068

(18)



TAMHSEUCC072

(19)



TAMHSEUCC075

(20)



TAMHSEUCC078

(21)



TAMHSEUCC079

(22)



TAMHSEUCC080

(23)



TAMHSEUCC081

(24)



TAMHSEUCC086

(25)

Plate XII



TAMHSEUCC087

(26)



TAMHSEUCC089

(27)



TAMHSEUCC090

(28)



TAMHSEUCC092

(29)



TAMHSEUCC095

(30)



TAMHSEUCC096

(31)



TAMHSEUCC097

(32)



TAMHSEUCC098

(33)



TAMHSEUCC113

(34)



TAMHSEUCC116

(35)

Plate XIII



TAMHSEUCC117
(36)



TAMHSEUCC121
(37)



TAMHSEUCC120
(38)



TAMHSEUCC146
(39)



TAMHSEUCC148
(40)



TAMHSEUCC154
(41)



TAMHSEUCC156
(42)



TAMHSEUCC158
(43)



TAMHSEUCC160
(44)

Plate XIV



TAMHSEUCC161
(45)



TAMHSEUCC163
(47)



TAMHSEUCC170
(49)



TAMHSEUCC182
(51)



TAMHSEUCC186
(53)



TAMHSEUCC162
(46)



TAMHSEUCC167
(48)



TAMHSEUCC172
(50)



TAMHSEUCC183
(52)



TAMHSEUCC209
(54)

Plate XV



TAMHSEUCC211

(55)



TAMHSEUCC213

(56)



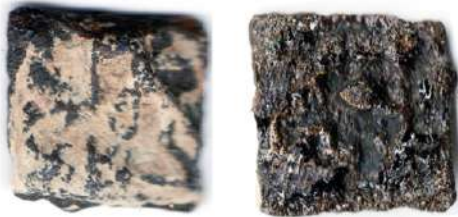
TAMHSEUCC219

(57)



TAMHSEUCC223

(58)



TAMHSEUCC224

(59)



TAMHSEUCC225

(60)

Type 4: Universal square/ rectangular with ladder
(with channel)



TAMHSEUCC077

(1)



TAMHSEUCC151

(2)

**Plate XVI
(without channel)**



TAMHSEUCC036

(3)



TAMHSEUCC038

(4)



TAMHSEUCC040

(5)



TAMHSEUCC043

(6)



TAMHSEUCC045

(7)



TAMHSEUCC061

(8)



TAMHSEUCC063

(9)



TAMHSEUCC064

(10)



TAMHSEUCC069

(11)

Plate XVII



TAMHSEUCC070
(12)



TAMHSEUCC071
(13)



TAMHSEUCC083
(14)



TAMHSEUCC088
(15)



TAMHSEUCC093
(16)



TAMHSEUCC102
(17)



TAMHSEUCC103
(18)

Plate XVIII



TAMHSEUCC107

(19)



TAMHSEUCC110

(20)



TAMHSEUCC111

(21)



TAMHSEUCC115

(22)



TAMHSEUCC118

(23)



TAMHSEUCC124

(24)



TAMHSEUCC125

(25)



TAMHSEUCC150

(26)

Plate XIX



TAMHSEUCC152
(27)



TAMHSEUCC153
(28)



TAMHSEUCC155
(29)



TAMHSEUCC157
(30)



TAMHSEUCC159
(31)



TAMHSEUCC164
(32)



TAMHSEUCC168
(33)



TAMHSEUCC171
(34)



TAMHSEUCC174
(35)



TAMHSEUCC176
(36)

Plate XX



TAMHSEUCC180
(37)



TAMHSEUCC185
(39)



TAMHSEUCC212
(41)



TAMHSEUCC215
(43)



TAMHSEUCC217
(45)



TAMHSEUCC181
(38)



TAMHSEUCC188
(40)



TAMHSEUCC214
(42)



TAMHSEUCC216
(44)



TAMHSEUCC218
(46)

Plate XXI



TAMHSEUCC220
(47)



TAMHSEUCC226
(48)

Type 5: Universal Square/ Rectangular with hollow cross
(with Channel)



TAMHSEUCC101
(1)



TAMHSEUCC177
(2)



TAMHSEUCC189
(3)

(without Channel)



TAMHSEUCC042
(4)



TAMHSEUCC060
(5)

Plate XXII



TAMHSEUCC074

(6)



TAMHSEUCC084

(7)



TAMHSEUCC085

(8)



TAMHSEUCC166

(9)



TAMHSEUCC173

(10)



TAMHSEUCC184

(11)



TAMHSEUCC207

(12)



TAMHSEUCC208

(13)



TAMHSEUCC221

(14)



TAMHSEUCC222

(15)

Plate XXIII



TAMHSEUCC30

(16)



TAMHSEUCC106

(17)



TAMHSEUCC149

(18)

**Type 6: Universal Square/ Rectangular with Bull in place of Elephant
(without channel)**



TAMHSEUCC206

(1)

**Type 7: Universal Square/ Rectangular Hybrid type
(with channel)**



TAMHSEUCC169

(1)

**Plate XXIV
(without channel)**



**TAMHSEUCC104
(2)**



**TAMHSEUCC179
(3)**



**TAMHSEUCC210
(4)**



**TAMHSEUCC035
(5)**

Coin Fragments



**TAMHSEUCC109
(1)**



**TAMHSEUCC122
(2)**



**TAMHSEUCC175
(3)**



**TAMHSEUCC127
(4)**

Plate XXV



TAMHSEUCC128
(5)



TAMHSEUCC129
(6)



TAMHSEUCC227
(7)



TAMHSEUCC228
(8)



TAMHSEUCC229
(9)



TAMHSEUCC230
(10)



TAMHSEUCC231
(11)

Plate XXVI
Unidentified Coins
(with channel)



TAMHSEUCC205
(1)

(without channel)



TAMHSEUCC031
(2)



TAMHSEUCC034
(3)



TAMHSEUCC039
(4)



TAMHSEUCC051
(5)



TAMHSEUCC057
(6)



TAMHSEUCC059
(7)

Plate XXVII



TAMHSEUCC065
(8)



TAMHSEUCC066
(9)



TAMHSEUCC073
(10)



TAMHSEUCC076
(11)



TAMHSEUCC082
(12)



TAMHSEUCC091
(13)



TAMHSEUCC099
(14)



TAMHSEUCC100
(15)



TAMHSEUCC105
(16)



TAMHSEUCC112
(17)

Plate XXVIII



TAMHSEUCC114
(18)



TAMHSEUCC119
(19)



TAMHSEUCC123
(20)



TAMHSEUCC126
(21)



TAMHSEUCC165
(22)



TAMHSEUCC178
(23)



TAMHSEUCC187
(24)



TAMHSEUCC204
(25)

Plate XXIX



TAMHSEUCC028
(26)



TAMHSEUCC029
(27)

Sri Lankan Oblong Lakṣmī Type Plaque



TAMHSEUCC046
(1)



TAMHSEUCC053
(2)

Prof. Susmita Basu Majumdar, Department of Ancient Indian History and Culture, University of Calcutta, specializes in Epigraphy and Numismatics, Cultural and Religious History and History of Medical Science and Surgery. She has been actively framing and conducting courses on Epigraphy, Numismatics, Prakrit Language and Grammar in prestigious institutions across the country and abroad. susmita_bm@yahoo.com

Ms. Sutanwi Ghosh is working as a Research Associate at Jñāna-Pravāha, Varanasi, on the project “Onomastics and Toponym Studies” headed by Prof. Susmita Basu Majumdar. She has completed her Bachelors (Honours) in History from Bethune College, University of Calcutta in 2022 and her Masters in Ancient Indian History and Culture from Department of Ancient Indian History and Culture, University of Calcutta in 2024. ghoshsutanwi@gmail.com

Mr. Soumyadeep Mitra is a Guest Lecturer in History at R.K.M. Residential College (Autonomous), Narendrapur, and Visiting Academic Counsellor at Dr. A.P.J. Abdul Kalam Government College (NSOU Unit). His research focuses on the economic and monetary history of early and early medieval India, focusing on numismatics and regional monetary networks. He has completed M.A., University of Calcutta, and obtained M.Phil. from Jadavpur University. soumyadeepmitra87@gmail.com